

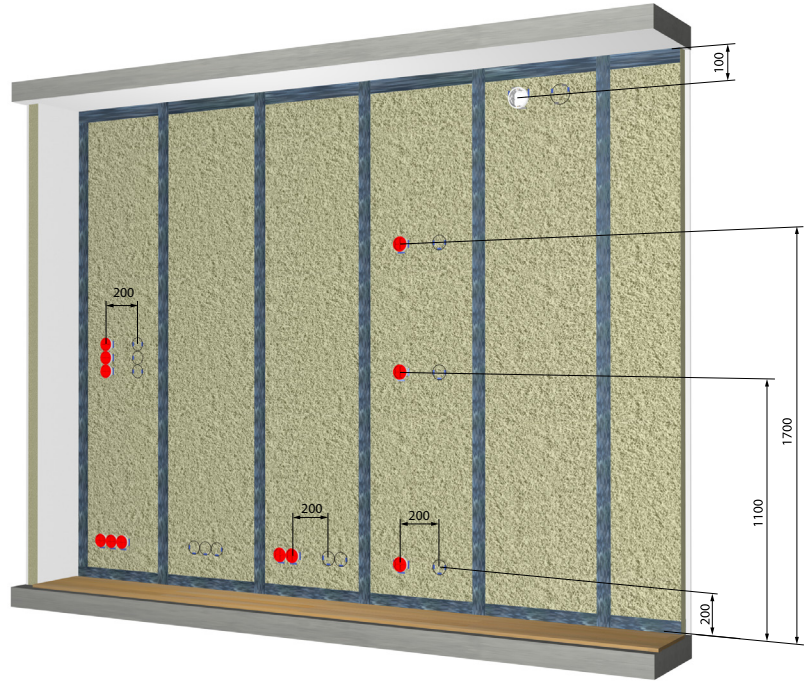
02/2023

# EI30 paloluokiteltu seinä

## Asennusohje koje- ja jakorasioille












### Paloluokiteltu seinä EI30 ABB koje- ja jakorasiat

ABB:n koje- ja jakorasiat ovat VTT:n testaamia (Testausseloste nro VTT-S-2211-10) asennettavaksi EI30 paloluokiteltuihin seiniin tämän asennusohjeen mukaan.

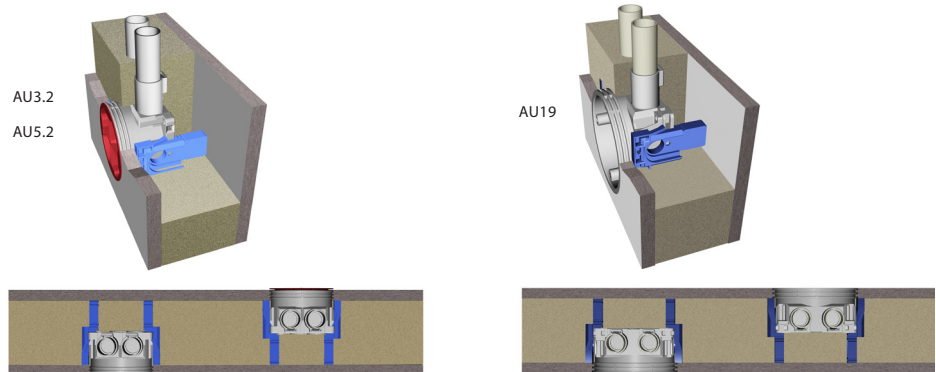


### Seinän rakenne:

Puu- tai metalliranka c/c 600 mm  
min. 66 mm kivivilla 30 kg/m<sup>3</sup>  
Rasiat c/c 200 mm

											
	AU3.2	AU3.2	AU3.2	AU3.2	AU3.2	AU5.2	AU5.2	AU5.2	AU5.2	AU5.2	AU19
		2 kpl vaaka	3 kpl vaaka	2 kpl pysty	3 kpl pysty		2 kpl vaaka	3 kpl vaaka	2 kpl pysty	3 kpl pysty	
<b>Asennuskorkeus lattiasta:</b>											
200 mm	✓	✓	✓			✓	✓	✓			
1100 - 1700 mm	✓			✓	✓	✓			✓	✓	
<b>Asennuskorkeus katosta:</b>											
100 mm											✓

✓ = hyväksytty



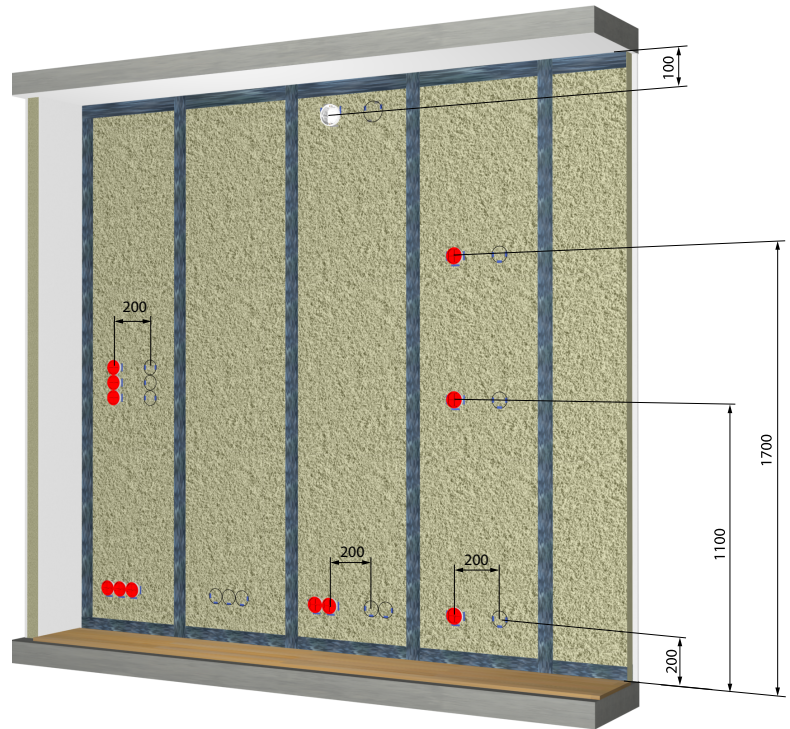
03/2019

# EI60 paloluokiteltu seinä

## Asennusohje koje- ja jakorasioille









### Paloluokiteltu seinä EI60 ABB koje- ja jakorasiat

ABB:n koje- ja jakorasiat ovat VTT:n testaamia (testausseoste nro VTT-S-08855-11) asennettavaksi EI60 paloluokiteltuihin seiniin tämän asennusohjeen mukaan.

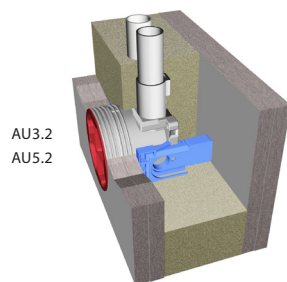


### Seinän rakenne:

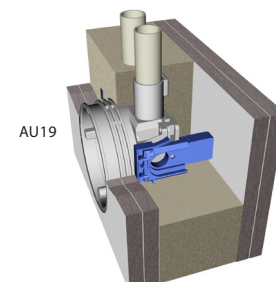
Puu- tai metalliranka min 66 mm c/c  
600 mm min. 66 mm kivilla 30 kg/m<sup>3</sup>  
Rasiat c/c 200 mm

								
	AU3.2	AU3.2	AU3.2	AU3.2	AU3.2	AU5.2	AU5.2	AU19
		2 kpl vaaka	3 kpl vaaka	2 kpl pysty	3 kpl pysty		2 kpl vaaka	
<b>Asennuskorkeus lattiasta:</b>								
200 mm	✓	✓	✓			✓	✓	
1100 mm	✓			✓	✓	✓		
1700 mm						✓		✓
<b>Asennuskorkeus katosta:</b>								
100 mm	✓					✓		✓

✓ = hyväksytty



AU3.2  
AU5.2



AU19

