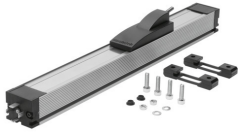


Displacement encoder MLO-POT-450-TLF

Part number: 152628

FESTO



 General operating condition

Data sheet

| Feature | Value |
|--|---|
| CE mark (see declaration of conformity) | To EU EMC Directive |
| Functional principle of measuring system | Analogue |
| Ambient temperature | -30 °C ... 100 °C |
| Recommended wiper current | <1 µA |
| Max. wiper current, short-time | 10000 µA |
| Max. travel speed | 10 m/s |
| Max. travel acceleration | 200 m/s ² |
| Displacement resolution | 0.01 mm |
| Non-dependent linearity | 0.05 % |
| Temperature coefficient | 5 ppm/K |
| Stroke | 450 mm |
| Output signal | Analogue |
| Connection resistance | 5 kOhm |
| Connection resistance tolerance | 20 % |
| Nominal operating voltage DC | 10 V |
| Max. operating voltage DC | 42 V |
| Permissible voltage fluctuations | < |
| Max. current consumption | 4 mA |
| Electrical connection | 4-pin Type A Plugs To DIN 43650 Square design |
| Design | With cover strip With moving slide Open profile |
| Parallel offset of coupling | ± 1.5 mm |
| Angle offset of driver | ± 1 ° |
| Mounting position | optional |
| Product weight | 1200 g |
| Material housing | Wrought aluminium alloy Anodised |
| Material covering | Steel |
| Material slide housing | Die-cast aluminium Polymer |
| Material slide coupling | Steel |
| Material cover | Polymer |
| Material mounting clips | PEI |

| Feature | Value |
|---|----------------------------|
| Degree of protection at top | To IEC 60529 |
| Degree of protection at bottom | To IEC 60529 |
| Vibration resistance to DIN/IEC 68 Part 2-6 | Tested to severity level 2 |
| Continuous shock resistance to DIN/IEC 68 Part 2-82 | Tested to severity level 2 |
| LABS (PWIS) conformity | VDMA24364-B2-L |