

**Ecostat Fine**  
**Shower thermostat for exposed installation 150cc DZR**  
 Finish: **Matt Black** Article Number: **13352670**



### Description

#### product features

- 1 function
- temperature and water flow control
- EcoStop+ button limits the water consumption to 6 l/min
- thermostat cartridge
- maximum flow rate at 3 bar: 16,5 l/min
- min. operating pressure: 1 bar
- max. operating pressure: 10 bar
- includes optional accessory to limit total flow to 7,6 l/min where required
- Safety stop at 40 °C
- temperature limitation adjustable
- non-return valve
- material handles: metal
- centre distance: 150 mm
- connection dimension: DN20
- connection type: G 3/4
- dirt filter included

### Technology



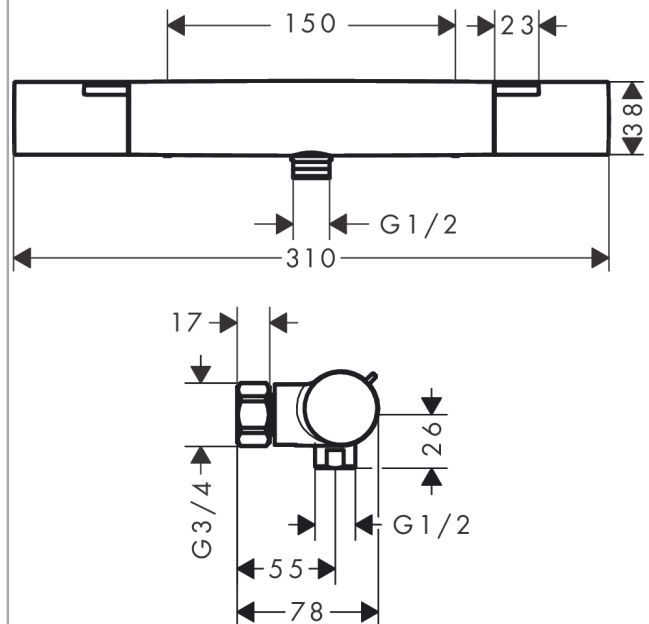
### Design awards



### Product image



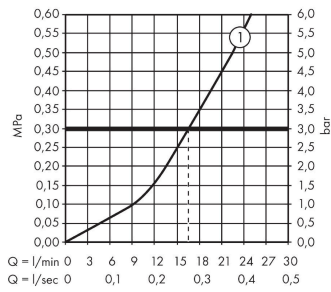
### Scale drawing



**Ecostat Fine**  
**Shower thermostat for exposed installation 150cc DZR**  
 Finish: **Matt Black** Article Number: **13352670**



**Flowchart**

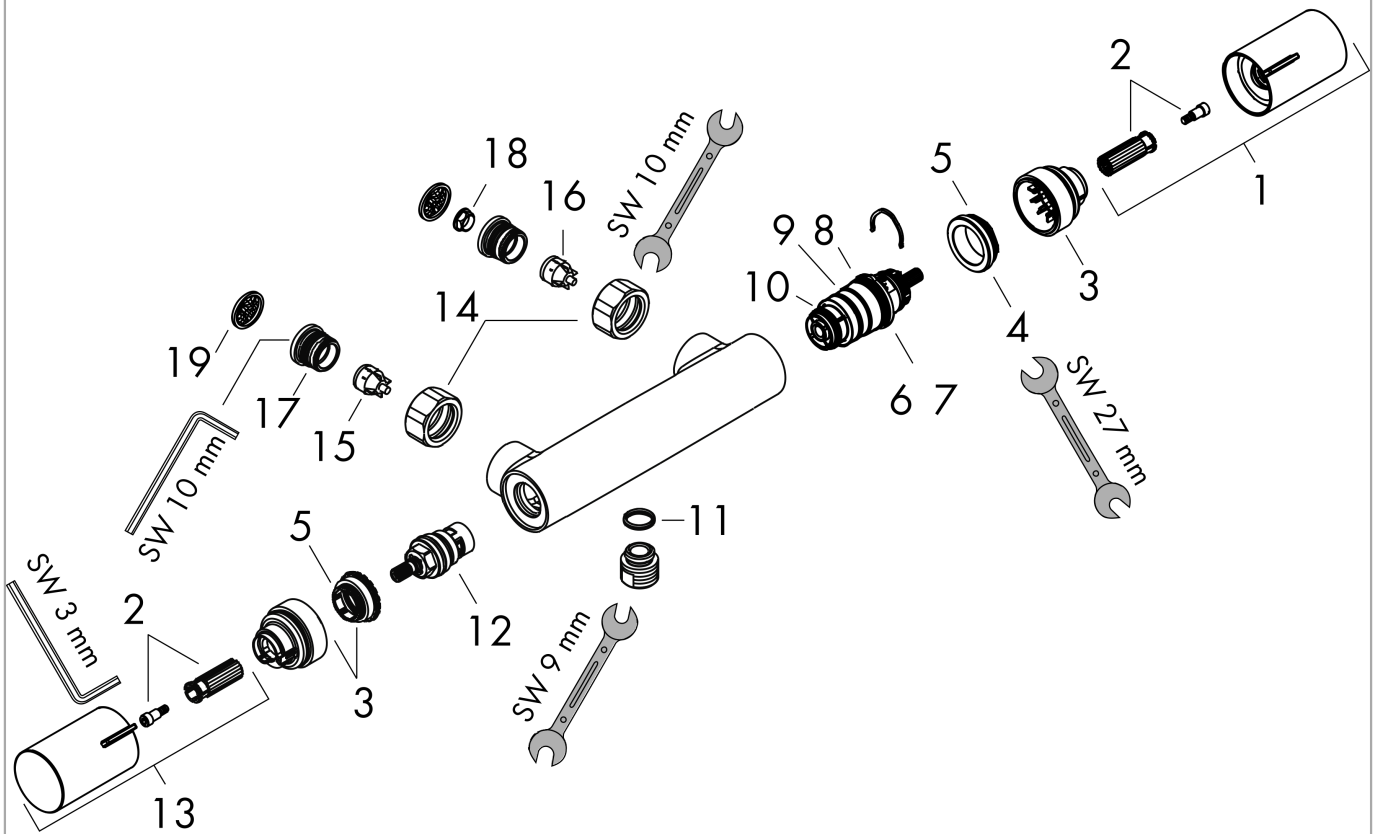


**Ecostat Fine**  
**Shower thermostat for exposed installation 150cc DZR**  
 Finish: **Matt Black** Article Number: **13352670**



**Exploded Drawing**

Year of production: >04/24



**Ecostat Fine**  
**Shower thermostat for exposed installation 150cc DZR**  
 Finish: **Matt Black** Article Number: **13352670**



## Spare part list

Year of production: >04/24

Pos.	Description	Article Number	PC	PU
1	handle for thermostat	87707670	60	1
2	handle fixing set	95843000	3	1
3	safety set	87708000	3	1
4	nut	98913000	6	1
5	O-ring 26x1,5	98390000	1	1
6	thermostat cartridge	98282000	14	1
7	cartridge for exchanged connections	92373000	18	1
8	O-ring 25x2,5	92146000	3	1
9	O-ring 25x1,5	98146000	1	1
10	O-ring 20x1,5	98197000	1	1
11	O-ring 14x2	98129000	1	1
12	shut off unit	94149000	8	1
13	handle	87706670	59	1
14	set of nuts	96157670	58	1
15	non return valve (pressure-resistant up to 2 MPa)	93136000	8	1
16	non return valve	96737000	8	1
17	O-ring 17x1,5	98137000	1	1
18	flow limiter	97510000	4	1
19	filter packing	96922000	3	1