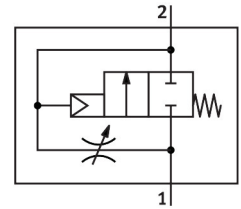



Soft start valve MS12-DL-G

Part number: 541497

FESTO



 General operating condition

Data sheet

Feature	Value
Exhaust-air function	With flow control option
Type of actuation	Pneumatic
Mounting position	optional
Manual override	None
Design	Piston seat
Type of reset	Mechanical spring
Type of piloting	Direct
Pilot air supply	Internal
Flow direction	Non-reversible
Symbol	00991513
Valve function	2/2
Operating pressure	2 bar ... 20 bar
Standard nominal flow rate (standardised to DIN 1343)	25000 l/min ... 42000 l/min
Operating medium	Compressed air to ISO 8573-1:2010 [7:-:-]
Corrosion resistance class CRC	2 - Moderate corrosion stress
LABS (PWIS) conformity	VDMA24364-B1/B2-L
Media temperature	-10 °C ... 60 °C
Ambient temperature	-10 °C ... 60 °C
Product weight	3600 g
Type of mounting	Either: In-line installation With accessories
Pneumatic connection, port 1	Manifold module
Pneumatic connection, port 2	Manifold module
Material seals	NBR
Material housing	Die-cast aluminium