

# Bolts AA4, Series CM1

1823120023

Bolts

2023-11-14

## Bolts

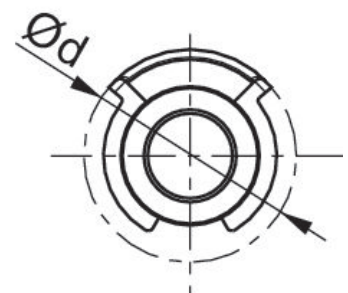


## Technical data

Industry	Industrial
Piston diameter	63 mm
Axle pivot $\varnothing$	23 mm
Weight	0.12 kg

## Material

Housing material	Steel, chrome-plated
Surface housing	galvanized
Fig.	Fig. 1
Part No.	1823120023



# Bolts AA4, Series CM1

1823120023

Bolts

2023-11-14

---

Piston Ø	Part No.	Ø d max.	EK e8	EL	L max.	L6 max.
32	1823120020	20	10	45.2 +0,3	3.5	9
40	1823120021	22	12	52.2 +0,3	4	9
50	1823120022	22	12	60.2 +0,3	4	9
63	1823120023	28	16	70.2 +0,3	4.5	11
80	1823120024	28	16	90.2 +0,3	4.5	11
100	1823120025	38	20	110.2 +0,3	5	11