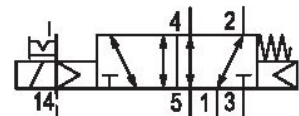
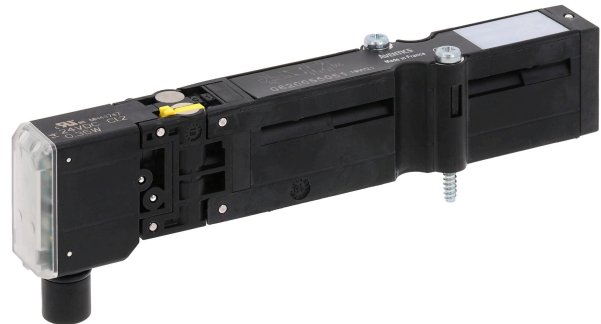


5/2-directional valve, Series HF03-LG

0820055051

General series information
Series HF03-LG

- The AVENTICS Series HF03-LG valve system is ideal for a variety of applications. It is versatile due to its wide connectivity and modularity.



Technical data

Industry
Industrial

Activation
Electrically

Nominal flow Q_n
850 l/min

Switching principle
5/2

Working pressure min.
-0.9 bar

Working pressure max
10 bar

Operational voltage
24 V DC

Pilot valve width
16 mm

Valve type
Spool valve, positive overlapping

DC operating voltage
24 V

Voltage tolerance DC
-15% / +20%

Manual override
with detent

Actuating control
Single Solenoid

Sealing principle
Soft Seal

Pilot
External

Certificates
UR (Underwriters Laboratories)

Connection type
Plate connection

Return
With spring return

Blocking principle

Single base plate principle

Control pressure min.

2.5 bar

Control pressure max.

10 bar

Min. ambient temperature

0 °C

Max. ambient temperature

50 °C

Min. medium temperature

0 °C

Max. medium temperature

50 °C

Medium

Compressed air

Max. particle size

5 µm

Oil content of compressed air min.

0 mg/m³

Oil content of compressed air max.

5 mg/m³

Pilot control exhaust

With collective pilot air exhaust

Flow conductance b

0.22

Flow conductance C

2.98 l/(s*bar)

Power consumption DC

0.35 W

LED status display

Yellow

Duty cycle

100 %

Typ. switch-on time

16 ms

Typ. switch-off time

23 ms

Pilot valve width

16 mm

Protection class with connection

IP65

Protective circuit

Z-diode

Reverse polarity protection

Protected against polarity reversal

mounting screws

cross recessed DIN EN ISO 4757-Z1

Mounting screw tightening torque

1.3 Nm

Weight

0.082 kg

Material

Housing material

Polyamide fiber-glass reinforced

Seal material

Acrylonitrile butadiene rubber

Part No.

0820055051

Technical information

The pilot type (external/internal) is not implemented in the valve, but in the end plate of the valve system.

The pilot valve is UL (Underwriters Laboratories) certified.

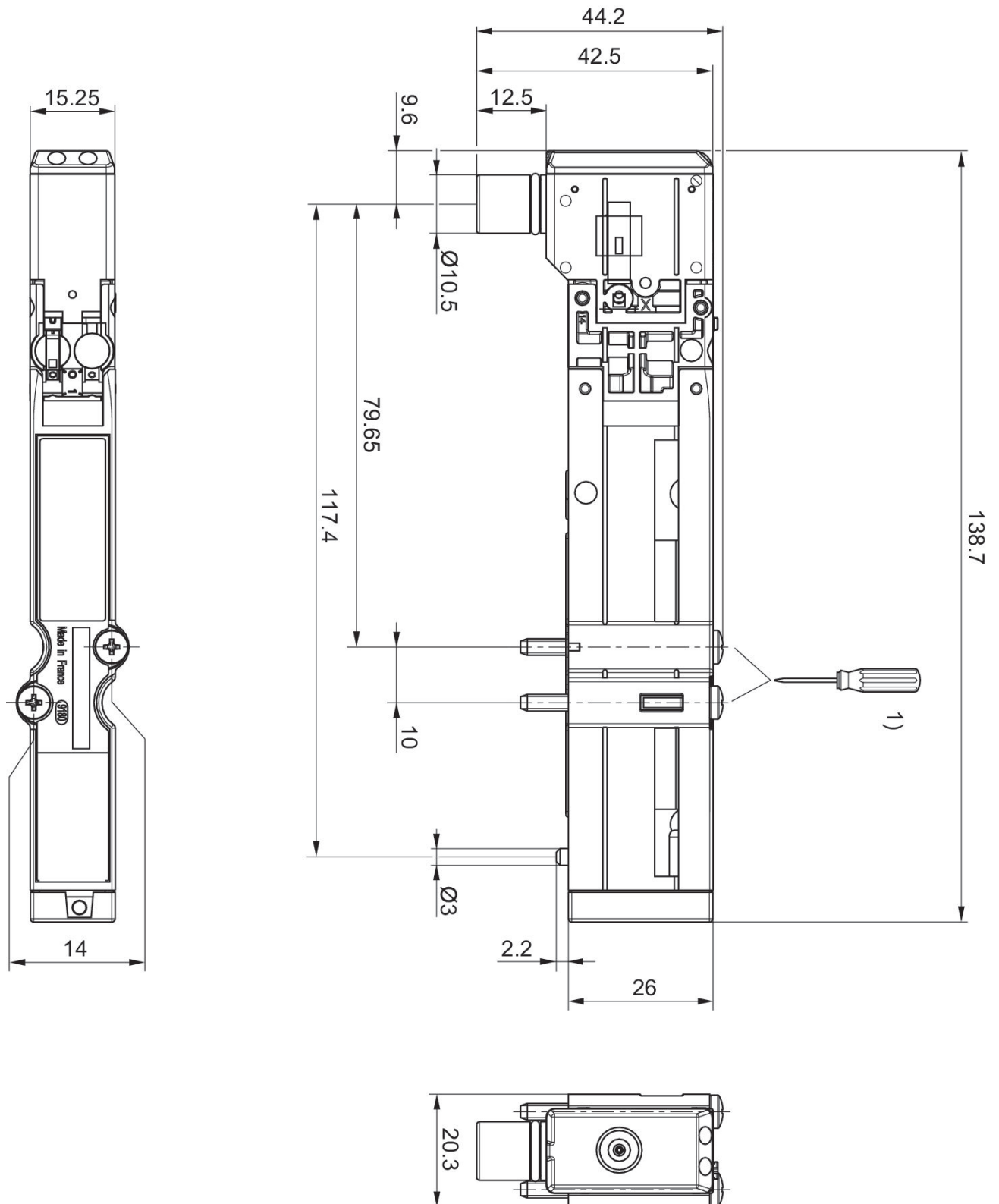
The min. control pressure must be adhered to, since otherwise faulty switching and valve failure may result!

The pressure dew point must be at least 15 °C under ambient and medium temperature and may not exceed 3 °C .

The oil content of compressed air must remain constant during the life cycle.

Use only the approved oils from AVENTICS. Further information can be found in the “Technical information” document (available in <https://www.emerson.com/en-us/support>).

Dimensions



1) = 1.1 +0.2 Nm 800tr/min. max.