

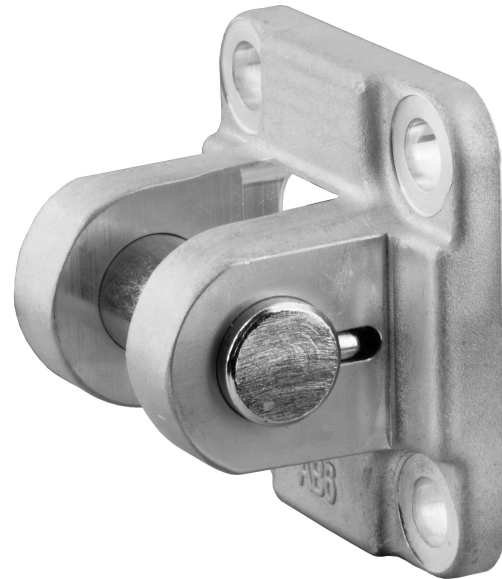
Clevis mounting AB6, Series CM1

1827001595

Clevis
mounting

2023-11-14

AVENTICS Clevis mountings



Technical data

| | |
|------------------|------------|
| Industry | Industrial |
| Standardization | ISO 15552 |
| Piston diameter | 50 mm |
| Swivel bearing Ø | 16 mm |

Material

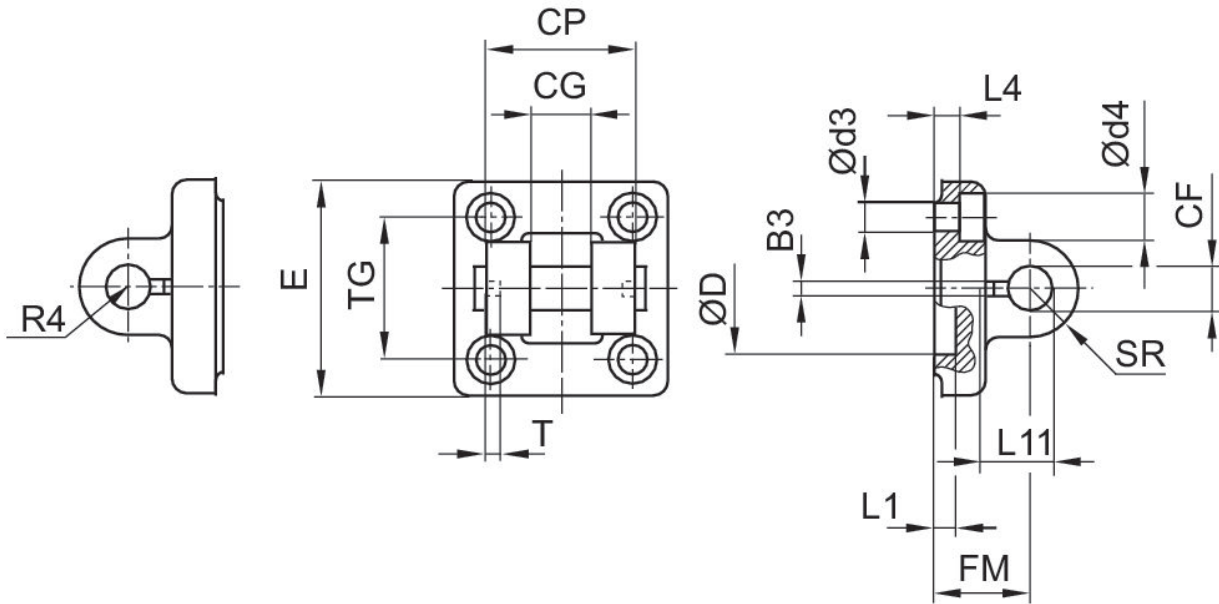
| | |
|------------------|----------------------|
| Housing material | Aluminum |
| Surface housing | forged |
| Screws material | Steel, chrome-plated |
| Surface screws | galvanized |
| Part No. | 1827001595 |

Clevis mounting AB6, Series CM1

1827001595

Clevis
mounting

2023-11-14



| Piston Ø | Part No. | B3 ±0,2 | Ø CF F7 | CG D10 | CP d12 | Ø d3 | Ø d4 | Ø D | E |
|----------|------------|---------|---------|--------|--------|------|------|-----|-----|
| 32 | 1827001593 | 3.3 | 10 | 14 | 34 | 6.6 | 11 | 30 | 46 |
| 40 | 1827001594 | 4.3 | 12 | 16 | 40 | 6.6 | 11 | 35 | 52 |
| 50 | 1827001595 | 4.3 | 16 | 21 | 45 | 9 | 15 | 40 | 64 |
| 63 | 1827002024 | 4.3 | 16 | 21 | 51 | 9 | 15 | 45 | 74 |
| 80 | 1827001597 | 4.3 | 20 | 25 | 65 | 11 | 18 | 45 | 94 |
| 100 | 1827001598 | 4.3 | 20 | 25 | 75 | 11 | 18 | 55 | 113 |
| 125 | 1827001599 | 6.3 | 30 | 37 | 97 | 14 | 20 | 60 | 138 |
| 160 | 1827001600 | 6.3 | 35 | 43 | 122 | 18 | 26 | 65 | 180 |
| 200 | 1827001601 | 6.3 | 35 | 43 | 122 | 18 | 26 | 75 | 220 |
| 250 | 1827001602 | 8.3 | 40 | 49 | 125 | 22 | 33 | 90 | 280 |
| 320 | 5239013432 | 8.3 | 50 | 60 | 150 | 26 | 36 | 110 | 340 |

| Piston Ø | FM ±0,2 | L1 min. | L4 ±0,5 | L11 -0,5 | R4 | SR | T ±0,2 | TG |
|----------|---------|---------|---------|----------|----|------|--------|-----------|
| 32 | 22 | 4.5 | 5.5 | 16.5 | 17 | 10 | 3 | 32,5 ±0,2 |
| 40 | 25 | 4.5 | 5.5 | 18 | 20 | 12 | 4 | 38 ±0,2 |
| 50 | 27 | 4.5 | 6.5 | 23 | 22 | 15 | 4 | 46,5 ±0,2 |
| 63 | 32 | 4.5 | 6.5 | 23 | 25 | 15 | 4 | 56,5 ±0,2 |
| 80 | 36 | 4.5 | 10 | 27 | 30 | 20 | 4 | 72 ±0,2 |
| 100 | 41 | 4.5 | 10 | 27 | 32 | 20 | 4 | 89 ±0,2 |
| 125 | 50 | 7 | 10 | 40 | 42 | 26 | 6 | 110 ±0,3 |
| 160 | 55 | 10 | 10 | 45 | 46 | 32.5 | 6 | 140 ±0,3 |

Clevis mounting AB6, Series CM1

1827001595

Clevis
mounting

2023-11-14

| Piston Ø | FM ±0,2 | L1 min. | L4 ±0,5 | L11 -0,5 | R4 | SR | T ±0,2 | TG |
|----------|---------|---------|---------|----------|----|------|--------|----------|
| 200 | 60 | 10 | 11 | 45 | 49 | 32.5 | 6 | 175 ±0,3 |
| 250 | 70 | 12 | 11 | 53 | 55 | 40 | 8 | 220 ±0,3 |
| 320 | 80 | 11 | 15 | 69 | 65 | 50 | 8 | 270 ±0,3 |