

Fine setting valve

3610607300

Fine setting valves

- Qn max. [[900] l/min]
- Width: [[60] mm] ... [[100] mm]
- Poppet valve for dynamic pressure control



Technical data

Industry
Industrial

Type
Poppet valve

Actuating element
handwheel

Compressed air connection input
G 1/4

Compressed air connection type input
Internal thread

Compressed air connection output
G 1/4

Working pressure min.
0.1 bar

Working pressure max
10 bar

Regulation range min.
0.1 bar

Regulation range max.
4.1 bar

Min. ambient temperature
-25 °C

Max. ambient temperature
70 °C

Min. medium temperature
-25 °C

Max. medium temperature
70 °C

Medium
Compressed air

Nominal flow Qn
900 l/min

Hysteresis
< [[0,15] bar]

Parallel pressure displacement
1.4 bar

Weight
0.6 kg

Housing material
Die cast zinc

Seal material
Acrylonitrile butadiene rubber

Part No.
3610607300

Technical information

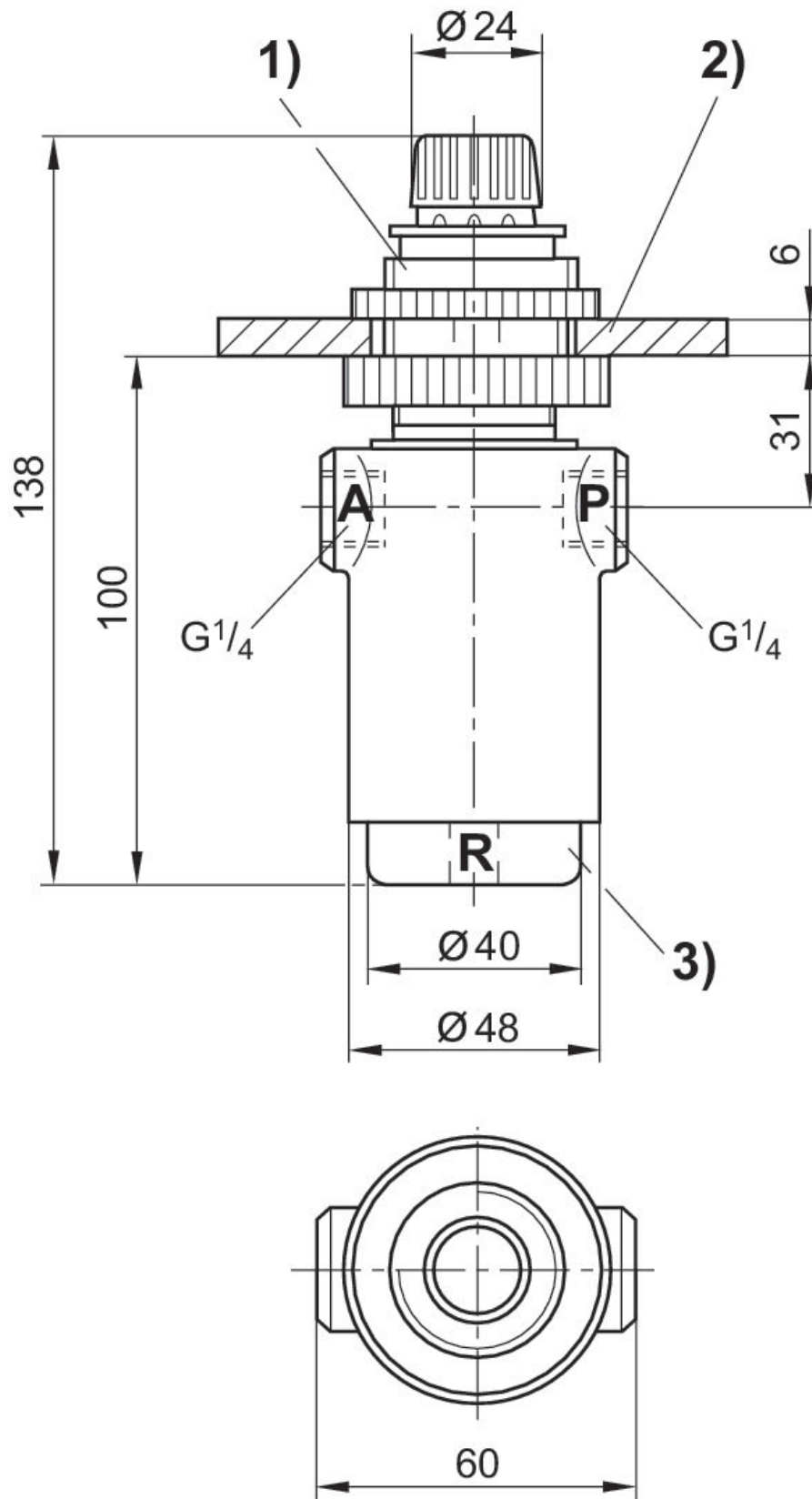
The min. control pressure must be adhered to, since otherwise faulty switching and valve failure may result!

The pressure dew point must be at least 15 °C under ambient and medium temperature and may not exceed 3 °C .

The oil content of compressed air must remain constant during the life cycle.

Use only the approved oils from AVENTICS. Further information can be found in the "Technical information" document (available in <https://www.emerson.com/en-us/support>).

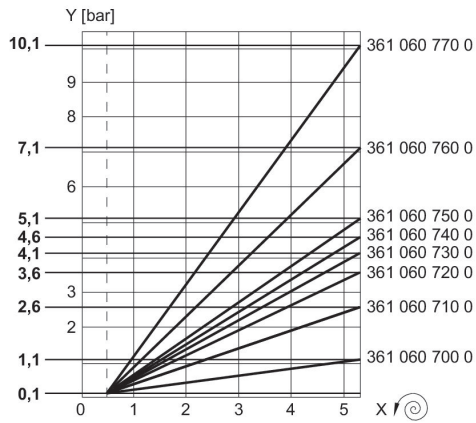
Dimensions



1) The handwheel can be adjusted once the locking ring has been pulled up. 2) hole for mounting plate $\text{Ø}31$ mm 3) screw cap
A = connection output

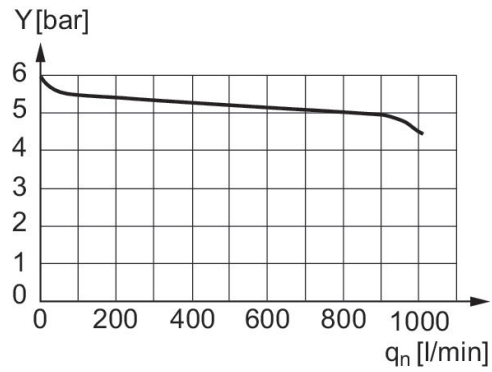
P = connection input
R = Port exhaust

Pressure characteristics curve



x = rotations of the handwheel
The characteristic curve can be moved parallel to the illustrated characteristic curve (in the y direction) using the screw cap.

Flow rate characteristic, p2 = 0,05 - 7 bar



input pressure: 8 bar, supply pressure: 6 bar y: pressure in line "A" [bar]