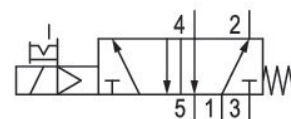


5/2-directional valve, Series TC15

0820058028

Series TC15 - inch

■ $Q_n = [[1100] \text{ l/min}] \dots [[1500] \text{ l/min}]$



Technical data

Industry
Industrial

Activation
Electrically

Nominal flow Q_n
1500 l/min

Switching principle
5/2

Compressed air connection output
G 1/4

Working pressure min.
3 bar

Working pressure max.
10 bar

Operational voltage AC at 50 Hz
230 V

Operational voltage AC at 60 Hz
230 V

Voltage tolerance AC 50 Hz
-10% / +10%

Voltage tolerance AC 60 Hz
-10% / +10%

Manual override
with detent

Electrical connection type
Plug

Electrical connection size
ISO 15217, form C

Actuating control
Single Solenoid

Sealing principle
Soft Seal

Pilot
Internal

Pilot valve width

15 mm

Valve type

Spool valve, positive overlapping

Control pressure min.

3 bar

Control pressure max.

10 bar

Min. ambient temperature

-10 °C

Max. ambient temperature

50 °C

Min. medium temperature

-10 °C

Compressed air connection input

G 1/4

Compressed air connection, exhaust

G 1/4

Holding power AC 50 Hz

1.6 VA

Holding power AC 60 Hz

1.4 VA

Switch-on power AC 50 Hz

2.2 VA

Switch-on power AC 60 Hz

2 VA

Nominal resistance

14700 Ω

Pilot valve width

15 mm

Connector standard

ISO 15217

Protection class with connection

IP65

Housing material

Polyamide fiber-glass reinforced

Seal material

Acrylonitrile butadiene rubber

Hydrogenated nitrile butadiene rubber

Material threaded bushing

Brass

Connection type

Pipe connection

Return

With spring return

Max. medium temperature

50 °C

Medium

Compressed air

Max. particle size

5 µm

Oil content of compressed air min.

0 mg/m³

Oil content of compressed air max.

5 mg/m³

Flow conductance b

0.33

Flow conductance C

6.8 l/(s*bar)

Duty cycle

100 %

Typ. switch-on time

12 ms

Typ. switch-off time

35 ms

Generic emission standard in accordance with

EN 50081:1992

Mounting on manifold strip

P-strip

Mounting screw tightening torque

2.5 Nm

Weight

0.235 kg

Die cast zinc

Material front plate

Polyamide fiber-glass reinforced

Part No.

0820058028

Technical information

The min. control pressure must be adhered to, since otherwise faulty switching and valve failure may result!

The pressure dew point must be at least 15 °C under ambient and medium temperature and may not exceed 3 °C .

The oil content of compressed air must remain constant during the life cycle.

Use only the approved oils from AVENTICS. Further information can be found in the “Technical information” document (available in <https://www.emerson.com/en-us/support>).

Dimensions
Single Solenoid

