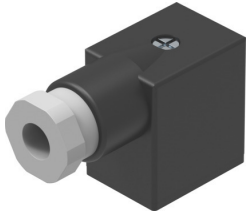


# Plug socket MSSD-F

Part number: 34431

FESTO



 General operating condition

## Data sheet

Feature	Value
Type of mounting	On solenoid valve via M3 central screw
Cable outlet	Angled
Note on cable outlet	180° rotatable
Mounting position	optional
Product weight	17 g
Electrical connection	3-pin Angled socket Square design MSF
Electrical connection 1, design	Angular
Electrical connection 1, connection type	Socket
Electrical connection 1, cable outlet	Angled
Electrical connection 1, number of connections/cores	3
Electrical connection 1, connection pattern	00995628
Electrical connection 2	Screw terminal
Operational voltage range DC	0 V ... 250 V
Operational voltage range AC	0 V ... 250 V
Current rating at 40° C	16 A
Protective conductor connection	Available
Cable fitting	Pg 9
Cable diameter	6 mm ... 8 mm
Nominal cross section conductor	≤1.5 mm <sup>2</sup>
Degree of protection	IP65
Note on degree of protection	In assembled state
Ambient temperature	-25 °C ... 90 °C
CE mark (see declaration of conformity)	To EU Low Voltage Directive In accordance with EU RoHS Directive
CE marking (see declaration of conformity)	To UK RoHS instructions To UK regulations for electrical equipment
LABS (PWIS) conformity	VDMA24364-B2-L
Material housing	Polymer
Housing colour	Black
Material seals	NBR