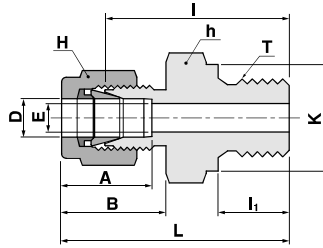


S-LOK Compression Tube Fittings

Male Connector
for Bonded Seal
SMC-G



Connects fractional tube to female ISO parallel thread

Part No.	Tube O.D		T	E	Width across flat			A	B	I	I ₁	L	K	
	D				h	H								
	in	mm					in							mm
SMC-2-2G	1/8	3.17	1/8	2.28	9/16	14.28	7/16	11.11	12.70	15.24	23.37	7.11	29.97	13.72
SMC-2-4G	1/8	3.17	1/4	2.28	3/4	19.05	7/16	11.11	12.70	15.24	28.70	11.18	35.31	18.03
SMC-2-6G	1/8	3.17	3/8	2.28	7/8	22.22	7/16	11.11	12.70	15.24	29.72	11.18	36.21	21.84
SMC-4-2G	1/4	6.35	1/8	4.82	9/16	14.28	9/16	14.28	15.24	17.78	24.89	7.11	32.26	13.72
SMC-4-4G	1/4	6.35	1/4	4.82	3/4	19.05	9/16	14.28	15.24	17.78	30.23	11.18	37.59	18.03
SMC-4-6G	1/4	6.35	3/8	4.82	7/8	22.22	9/16	14.28	15.24	17.78	61.50	11.18	38.86	21.84
SMC-4-8G	1/4	6.35	1/2	4.82	1-1/16	26.98	9/16	14.28	15.24	17.78	37.34	14.22	44.70	25.91
SMC-6-4G	3/8	9.52	1/4	7.11	3/4	19.05	11/16	17.46	16.76	19.30	31.75	11.18	39.12	18.03
SMC-6-6G	3/8	9.52	3/8	7.11	7/8	22.22	11/16	17.46	16.76	19.30	33.02	11.18	40.39	21.84
SMC-6-8G	3/8	9.52	1/2	7.11	1-1/16	26.98	11/16	17.46	16.76	19.30	38.86	14.22	46.23	25.91
SMC-8-4G	1/2	12.70	1/4	10.41	13/16	20.64	7/8	22.22	22.86	21.84	32.51	11.18	42.67	18.03
SMC-8-6G	1/2	12.70	3/8	10.41	7/8	22.22	7/8	22.22	22.86	21.84	33.02	11.18	43.18	21.84
SMC-8-8G	1/2	12.70	1/2	10.41	1-1/16	26.98	7/8	22.22	22.86	21.84	38.86	14.22	49.02	25.91
SMC-12-8G	3/4	19.05	1/2	15.74	1-1/16	26.98	1-1/8	28.58	24.38	21.84	38.86	14.22	49.02	25.91
SMC-12-12G	3/4	19.05	3/4	15.74	1-5/16	33.33	1-1/8	28.58	24.38	21.84	42.67	15.75	52.83	32.00
SMC-16-8G	1	25.40	1/2	22.35	1-3/8	34.92	1-1/2	38.10	31.24	26.41	43.69	14.22	55.88	25.91
SMC-16-16G	1	25.40	1	22.35	1-5/8	41.27	1-1/2	38.10	31.24	26.41	47.75	18.29	59.94	39.12
SMC-20-20G	1-1/4	31.75	1-1/4	27.68	2	50.80	1-7/8	47.63	41.14	38.86	51.16	20.00	73.26	49.00
SMC-24-24G	1-1/2	38.10	1-1/2	34.03	2-1/4	57.15	2-1/4	57.15	50.03	45.21	57.57	22.00	84.75	55.00

Connects metric tube to female ISO parallel thread

Part No.	Tube O.D		T	E	Width across flat		A	B	I	I ₁	L	K
	D				h	H						
	in	mm										
SMC-2M-2G	2	1/8	1.7	1.7	14	12	12.9	15.3	23.4	7.1	30.0	13.8
SMC-3M-2G	3	1/8	2.4	2.4	14	12	12.9	15.3	23.4	7.1	30.0	13.8
SMC-3M-4G	3	1/4	2.4	2.4	19	12	12.9	15.3	28.7	11.2	35.3	18.0
SMC-4M-2G	4	1/8	2.4	2.4	14	12	13.7	16.1	24.1	7.1	30.7	13.8
SMC-4M-4G	4	1/4	2.4	2.4	19	12	13.7	16.1	29.4	11.2	36.0	18.0
SMC-6M-2G	6	1/8	4.8	4.8	14	14	15.3	17.7	24.9	7.1	32.3	13.8
SMC-6M-4G	6	1/4	4.8	4.8	19	14	15.3	17.7	30.2	11.2	37.6	18.0
SMC-6M-6G	6	3/8	4.8	4.8	22	14	15.3	17.7	31.5	11.2	38.9	21.8
SMC-6M-8G	6	1/2	4.8	4.8	27	14	15.3	17.7	37.3	14.2	44.7	26.0
SMC-8M-2G	8	1/8	6.4	6.4	15	16	16.2	18.6	25.7	7.1	33.2	13.8
SMC-8M-4G	8	1/4	6.4	6.4	19	16	16.2	18.6	31.0	11.2	38.5	18.0
SMC-8M-6G	8	3/8	6.4	6.4	22	16	16.2	18.6	32.3	11.2	39.8	21.8
SMC-8M-8G	8	1/2	6.4	6.4	27	16	16.2	18.6	38.1	14.2	45.6	26.0
SMC-10M-4G	10	1/4	7.9	7.9	19	19	17.2	19.5	31.8	11.2	39.4	18.0
SMC-10M-6G	10	3/8	7.9	7.9	22	19	17.2	19.5	33.0	11.2	40.6	21.8
SMC-10M-8G	10	1/2	7.9	7.9	27	19	17.2	19.5	38.9	14.2	46.5	26.0
SMC-12M-4G	12	1/4	9.5	9.5	22	22	22.8	22.0	32.5	11.2	42.6	18.0
SMC-12M-6G	12	3/8	9.5	9.5	22	22	22.8	22.0	33.0	11.2	43.1	21.8
SMC-12M-8G	12	1/2	9.5	9.5	27	22	22.8	22.0	38.9	14.2	49.0	26.0
SMC-12M-12G	12	3/4	9.5	9.5	35	22	22.8	22.0	42.7	15.7	52.8	32.0
SMC-16M-6G	16	3/8	12.7	12.7	24	25	24.4	22.0	33.8	11.2	43.9	21.8
SMC-16M-8G	16	1/2	12.7	12.7	27	25	24.4	22.0	38.9	14.2	49.0	26.0
SMC-18M-8G	18	1/2	15.1	15.1	27	30	24.4	22.0	38.9	14.2	49.0	26.0
SMC-18M-12G	18	3/4	15.1	15.1	35	30	24.4	22.0	42.7	15.7	52.8	32.0
SMC-20M-8G	20	1/2	15.9	15.9	30	32	26.0	22.0	40.4	14.2	50.5	26.0
SMC-20M-12G	20	3/4	15.9	15.9	35	32	26.0	22.0	42.7	15.7	52.8	32.0
SMC-22M-12G	22	3/4	18.3	18.3	35	32	26.0	22.0	42.7	15.7	52.8	32.0
SMC-22M-16G	22	1	18.3	18.3	41	32	26.0	22.0	45.2	18.3	55.3	39.0
SMC-25M-12G	25	3/4	21.8	21.8	35	38	31.3	26.5	45.2	15.7	57.5	32.0
SMC-25M-16G	25	1	21.8	21.8	41	38	31.3	26.5	47.8	18.3	60.1	39.0
SMC-28M-16G	28	1	21.8	21.8	41	46	36.6	36.6	49.3	18.3	70.1	39.0
SMC-28M-20G	28	1-1/4	21.8	21.8	50	46	36.6	36.6	53.1	19.8	73.9	49.0
SMC-32M-20G	32	1-1/4	28.6	28.6	50	50	42.0	41.6	55.9	19.8	78.9	49.0
SMC-38M-24G	38	1-1/2	33.7	33.7	55	60	49.4	47.9	63.2	22.1	90.8	54.7