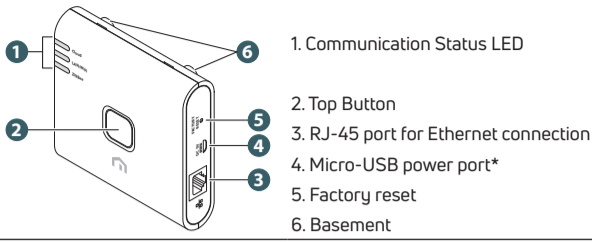


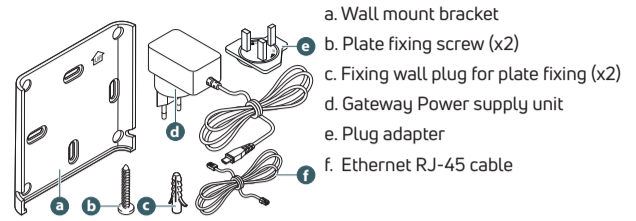
Unisenza Plus Gateway



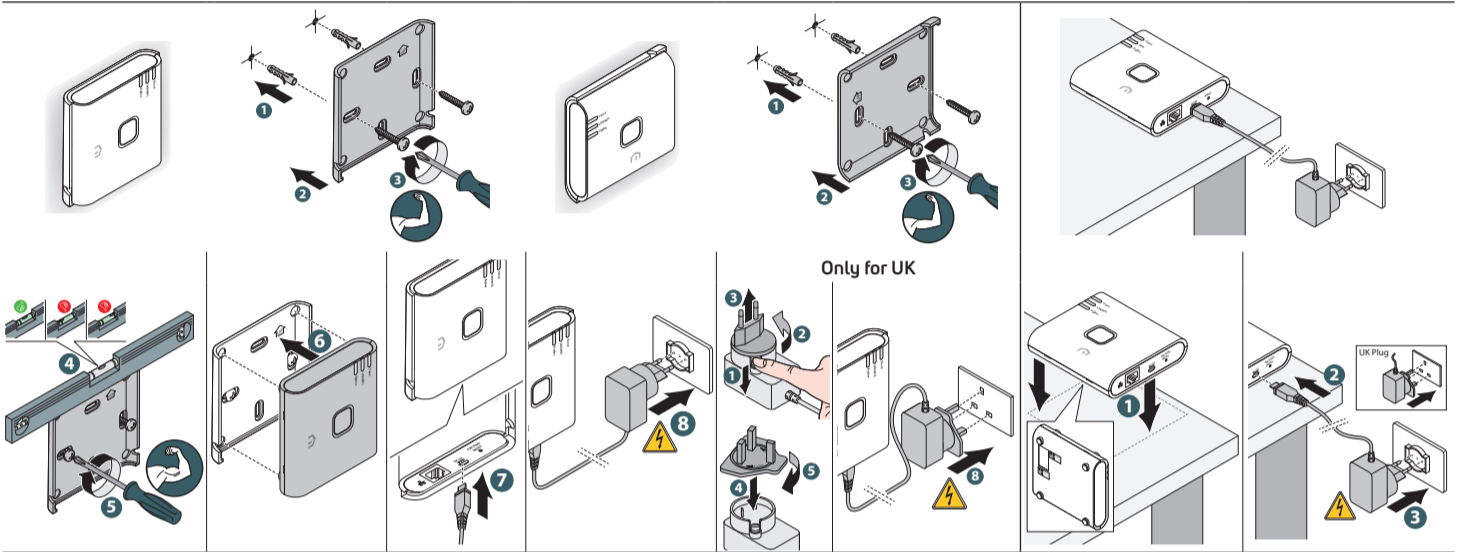
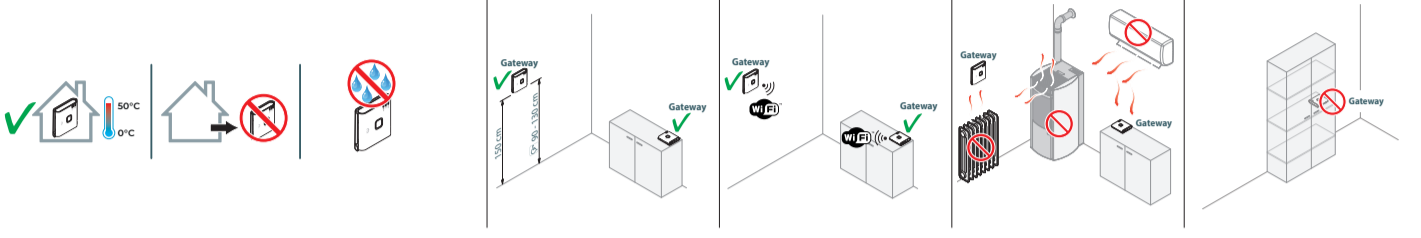
Overview



Cloud LED
LAN/Wi-Fi LED
ZigBee LED



Installation



Use

<p>Register the Gateway to the Cloud by Ethernet (LAN)</p>			
<p>Register the Gateway to the Cloud by WiFi</p>	<p>Select your Gateway and follow the instructions to complete the pairing.</p>		<p>Continue to follow the instructions to register the Gateway.</p> <p>If for any reason the original Wi-Fi network is not available or the password has been changed, use the "Add New Gateway" function on the app to scan the gateway again and update the Wi-Fi network and password.</p>
<p>Add UNISENZA PLUS device to Gateway using the APP</p>	<p>On the Unisenza Plus device, follow the instructions in the user guide to access the merge mode.</p>	<p>On the Unisenza Plus device, follow the instructions in the user guide to access the pairing mode.</p> <p>The association process then begins.</p>	<p>Complete the registration process by following the instructions on the app screen. After the Unisenza Plus device has been successfully connected to the gateway, the device informations are displayed on the app dashboard.</p>
<p>Add UNISENZA PLUS device without using the APP</p>	<p>To exit pairing mode, press and hold the button for 3 seconds. Merge mode ends 15 minutes after any attempt to merge the device.</p>		