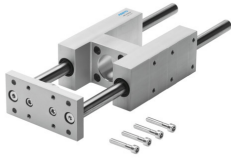


Guide unit FENG-100-500-KF

Part number: 34536

FESTO



 [General operating condition](#)

Data sheet

Feature	Value
Size	100
Stroke	500 mm
Mounting position	optional
Guide	Recirculating ball bearing guide
Design	Guidance
Explosion protection	The information in the certificate must be observed!
LABS (PWIS) conformity	VDMA24364-B2-L
Ambient temperature	-20 °C ... 80 °C
Max. force F _y	2300 N
Max. force F _y static	3120 N
Max. force F _z	2300 N
Max. force F _z static	3120 N
Max. moment M _x	198 Nm
Max. torque M _x static	268 Nm
Max. moment M _y	197 Nm
Max. torque M _y static	267 Nm
Max. moment M _z	197 Nm
Max. torque M _z static	267 Nm
Displacement force	40 N
Product weight	16840 g
Type of mounting	Via female thread
Note on materials	RoHS-compliant
Material guide component	Tempered steel
Material housing	Anodised wrought aluminium alloy
Material yoke plate	Tempered steel