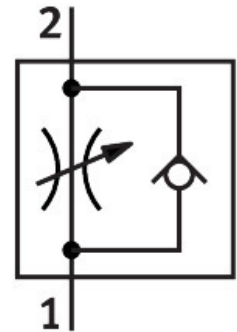



One-way flow control valve GR-QS-8

Part number: 193970

FESTO



 [General operating condition](#)

Data sheet

Feature	Value
Valve function	One-way flow control function
Pneumatic connection, port 1	QS-8
Pneumatic connection, port 2	QS-8
Adjustment component	Knurled screw
Type of mounting	Either: Front panel mounting With through-hole With accessories
Standard nominal flow rate in flow control direction	265 l/min
Standard nominal flow rate in blocked direction	500 l/min
Operating pressure	0.2 bar ... 10 bar
Ambient temperature	-10 °C ... 60 °C
Material housing	PA-reinforced
Explosion protection	The information in the certificate must be observed! Zone 1 (ATEX) Zone 2 (ATEX) Zone 21 (ATEX) Zone 22 (ATEX)
Mounting position	optional
Symbol	00991453
Operating medium	Compressed air to ISO 8573-1:2010 [7:4:4]
Note on operating and pilot medium	Lubricated operation possible (in which case lubricated operation will always be required)
LABS (PWIS) conformity	VDMA24364-B1/B2-L
Media temperature	-10 °C ... 60 °C
Product weight	23 g
Note on materials	RoHS-compliant
Material seals	NBR
Material release ring	POM
Material knurled head	Reinforced PA
Material adjusting screw	High-alloy steel