

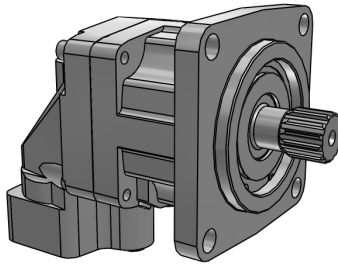


ENGINEERING YOUR SUCCESS.

Pump & Motor Division Europe  
Parker Hannifin Mfg. Germany GmbH & Co. KG  
Neefestrasse 96  
09116 Chemnitz, Germany  
Ph: +49 (0)371 393 70  
www.parker.com/PMDE

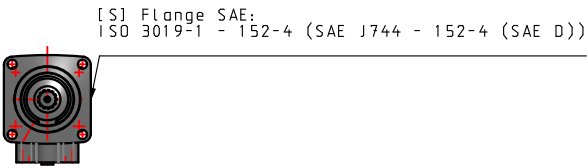
## Pump & Motor Division Europe F11/F12/F10

F12-110-MS-SV-S-000-0000-P0



*Interactive 3D graphic, click to activate and rotate  
(3D capable PDF viewer required)*

Technical Data	
Part No.	F12-110-MS-SV-S-000-0000-P0
Series	F11/F12/F10
Size	F12
Displacement	110 - 110.1 cc / 6.71 cu.in.
Function	M - Motor
Main Ports	S - ISO 6162-2
Mounting Flange	S - SAE 4 Flange
Shaft Seal	V - FPM, High Pressure, High Temperature
Shaft	S - ISO 3019-1 (SAE J744)
Version Number	000 - Standard
Option 1	0000 - Standard
Pressure	
Option 2	P0 - Standard, prepared for speed sensor
Weight [kg]	33.0

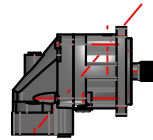
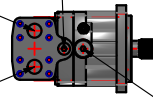


[S] Drain Port E:  
ISO 11926-1 - 1 1/16-12 (SAE J1926-1)

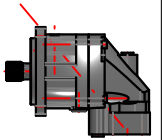
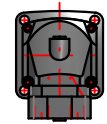
[S] Main Port B:  
ISO 6162-2 P32

[S] Main Port A:  
ISO 6162-2 P32

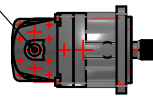
[S] Drain Port C:  
ISO 11926-1 - 1 1/16-12 (SAE J1926-1)



[S] Shaft:  
ISO 3019-1 - 44-4 (SAE J744 - 44-4 (SAE D))



[S] Drain Port D:  
ISO 11926-1 - 1 1/16-12 (SAE J1926-1)



For performance data, dimensions and deviations from standards, see catalog.

**Disclaimer:**

Parker PMDE has a continuous policy of product development and although the Company reserves the right to change specifications, it attempts to keep customers informed of any alterations. This publication is for general information only and customers are requested to contact their local Parker dealer for detailed information and advice on a products suitability for specific applications. All products are sold subject to the company's Standard conditions of sale.

F12-110-MS-SV-S-000-0000-P0



Price: contact Parker