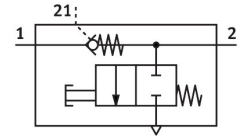


# Check valve VBNF-LBA-G14-Q8

Part number: 1927027

FESTO



[PDF](#) General operating condition

## Data sheet

Feature	Value
Valve function	Piloted non-return function
Selection of additional functions	Manually exhausted
Pneumatic connection, port 1	QS-8
Pneumatic connection, port 2	G1/4
Pilot air port 21	QS-8
Type of mounting	Screw-in
Operating pressure	0.02 MPa ... 1 MPa
Operating pressure	0.2 bar ... 10 bar
Pilot pressure	0.2 MPa ... 1 MPa
Pilot pressure	2 bar ... 10 bar
Pilot pressure	29 psi ... 145 psi
Ambient temperature	-10 °C ... 60 °C
Material housing	PBT
Operating medium	Compressed air to ISO 8573-1:2010 [7:4:4]
Mounting position	optional
Type act., cont. n.-r. func.	Pneumatic
Manual exhaust function	Non-detenting
Symbol	00991957
Rotatability	360°/no continuous swivelling permissible
Operating pressure complete temperature range	0.02 MPa ... 1 MPa
Operating pressure complete temperature range	0.2 bar ... 10 bar
Operating pressure complete temperature range	2.9 psi ... 145 psi
Standard flow rate 1->2 (6-0)	1100 l/min
Standard nominal flow rate 1->2 (6-5)	620 l/min
Switching time off	11 ms
Switching time on	8 ms
Explosion protection	Zone 2 (ATEX) Zone 22 (ATEX)
Note on operating and pilot medium	Lubricated operation possible (in which case lubricated operation will always be required)
Corrosion resistance class CRC	2 - Moderate corrosion stress
LABS (PWIS) conformity	VDMA24364-B1/B2-L
Media temperature	-10 °C ... 60 °C
Pilot medium	Compressed air to ISO 8573-1:2010 [7:4:4]
Nominal torque	10 Nm
Tolerance for nominal tightening torque	± 20%

<b>Feature</b>	<b>Value</b>
Product weight	65.6 g
Material covering	ES-BE
Note on materials	RoHS-compliant
Material cover	PBT
Material seals	NBR
Material hollow bolt	Wrought aluminium alloy
Material release ring	POM