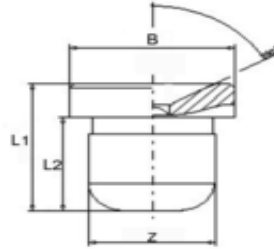


**Type D1a Flush-Type Grease Nipples - Drive-in Type**



- according to DIN 3405
- straight version A/180°
- drive type with plain shank
- standard versions according to DIN are made of steel, zinc-plated and passivated
- for other types and materials, please see table, or upon request

Z shank Ø  
L1 overall length  
L2 shank length  
B collar Ø



(all measures in mm)

<b>Z</b>	<b>5 mm Ø</b>			<b>Ref.- No.:</b>			
<b>L1</b>	<b>L2</b>	<b>B</b>		<b>Steel</b>	<b>Brass</b>	<b>SST303</b>	<b>SST316L</b>
7,5	5,5	8	●	3100185			

<b>Z</b>	<b>6 mm Ø</b>			<b>Ref.- No.:</b>			
<b>L1</b>	<b>L2</b>	<b>B</b>		<b>Steel</b>	<b>Brass</b>	<b>SST303</b>	<b>SST316L</b>
7,5	5,5	8	●	3100186	3110186	3120186	

<b>Z</b>	<b>6.35 mm, 1/4" Ø</b>			<b>Ref.- No.:</b>			
<b>L1</b>	<b>L2</b>	<b>B</b>		<b>Steel</b>	<b>Brass</b>	<b>SST303</b>	<b>SST316L</b>
7,5	5,5	8	●	3100187			

<b>Z</b>	<b>8 mm Ø</b>			<b>Ref.- No.:</b>			
<b>L1</b>	<b>L2</b>	<b>B</b>		<b>Steel</b>	<b>Brass</b>	<b>SST303</b>	<b>SST316L</b>
9,5	6,5	10	●	3100288	3110288	3120288	

<b>Z</b>	<b>10 mm Ø</b>			<b>Ref.- No.:</b>			
<b>L1</b>	<b>L2</b>	<b>B</b>		<b>Steel</b>	<b>Brass</b>	<b>SST303</b>	<b>SST316L</b>
9,5	6,5	12	●	3100389	3110389		