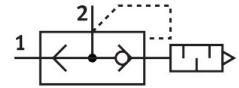


# Quick exhaust valve SEU-1/4

Part number: 6753

FESTO



[PDF](#) General operating condition

## Data sheet

Feature	Value
Valve function	Quick exhaust
Selection of additional functions	With silencer
Pneumatic connection, port 1	G1/4
Pneumatic connection, port 2	G1/4
Type of mounting	Screw-in
Standard nominal flow rate, exhaust 0.6-0.5 MPa (6-5 bar, 87-72.5 psi)	1100 l/min
Standard nominal flow rate, exhaust 0.6-0 MPa (6-0 bar, 87-0 psi)	2300 l/min
Standard nominal flow rate, air flow 0.6-0.5 MPa (6-5 bar, 87-72.5 psi)	960 l/min
Operating pressure	0.5 bar ... 10 bar
Ambient temperature	-20 °C ... 75 °C
Material housing	Die-cast zinc
Operating medium	Compressed air to ISO 8573-1:2010 [7:-:-]
Nominal size	7 mm
Mounting position	optional
Symbol	00991460
Note on operating and pilot medium	Lubricated operation possible (in which case lubricated operation will always be required)
LABS (PWIS) conformity	VDMA24364-B1/B2-L
Media temperature	-20 °C ... 75 °C
Sound pressure level	95 dB(A)
Product weight	120 g
Material seals	NBR