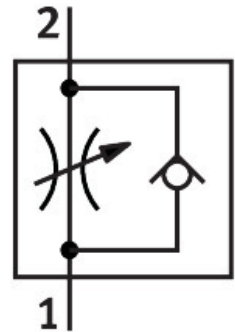


One-way flow control valve GRA-1/4-B

Part number: 6509

FESTO



 [General operating condition](#)

Data sheet

Feature	Value
Valve function	One-way flow control function
Pneumatic connection, port 1	Female thread G1/4
Pneumatic connection, port 2	Female thread G1/4
Adjustment component	Knurled screw
Type of mounting	Either: Front panel mounting With through-hole
Standard nominal flow rate in flow control direction	420 l/min
Standard nominal flow rate in blocked direction	780 l/min
Operating pressure	0.01 MPa ... 1 MPa
Operating pressure	0.1 bar ... 10 bar
Operating pressure	1.45 psi ... 145 psi
Ambient temperature	-20 °C ... 75 °C
Material housing	Die-cast zinc
Explosion protection	The information in the certificate must be observed! Zone 1 (ATEX) Zone 2 (ATEX) Zone 21 (ATEX) Zone 22 (ATEX)
Mounting position	optional
Symbol	00991453
Operating medium	Compressed air to ISO 8573-1:2010 [7:4:4]
Note on operating and pilot medium	Lubricated operation possible (in which case lubricated operation will always be required)
LABS (PWIS) conformity	VDMA24364-B1/B2-L
Storage temperature	-20 °C ... 75 °C
Media temperature	-20 °C ... 75 °C
Product weight	180 g
Note on materials	RoHS-compliant
Material seals	NBR
Material adjusting screw	Brass